

Camp Fire
Camp El Tesoro



YEARS
1934  2024



Camp Fire

Camp El Tesoro

Camper Guide 2024

Nature Day Camp

COME FIND more

Welcome! We are looking forward to a great summer at Camp Fire Camp El Tesoro! Campers will be participating in exciting nature studies that give them a chance to explore their world and the nature in our local area. The camp staff is committed to providing a safe and fun environment for your child to explore, laugh and grow.

We hope this guide answers all of your questions and provides a few tips on helping prepare you and your camper to have the best possible camp experience. Please take the time to review this information with your camper.

If you require any further details or would like to speak with a member of our staff, please call our office at 817.831.2111, ext. 155.

We can't wait to see you come across the swinging bridge!



CONTACT US



Camp El Tesoro
Camp Office: 817.989.9004
7710 Fall Creek Hwy
Granbury TX 76049

Camp Fire First Texas
Main Office: 817.831.2111
Fax: 817.831.5070

Customer Support Team
CampET@CampFireFW.org
817.831.2111, ext. 155

Kristin Bergthold
Day Camp Coordinator
KristinB@CampFireFW.org
817.989.9004

Dianne McKinley
Food Service Manager
Dianne@CampFireFW.org
817.989.9004

Jen Smith
Vice President of Outdoor
Jen@CampFireFW.org
817.831.2111, ext. 131

Brian Miller
President & CEO
Brian@CampFireFW.org
817.831.2111, ext. 104

Camp El Tesoro has been accredited by the American Camp Association for more than 50 years. Every 3 years, the camp demonstrates to ACA visitors that we meet up to 300 standards in health care, food service, site and facilities, transportation, administration, emergency management, human resources, program quality, and safety for activities such as waterfront, horseback riding, challenge course, and more.



CONTENTS



MISSION & VISION.....	4
OUR VALUES	4
OUR STATEMENT OF INCLUSION	5
DAY CAMP DAILY SCHEDULE	6
ACTIVITIES	6
CAMP INSPIRES.....	6
PROGRAM INFORMATION	6
OVERNIGHT OPTION*	7
CAMPBRAIN ACCOUNT.....	7
Logging In To Your Account	7
Cancellation Policy.....	7
Change Policy	7
Add Overnight Option.....	8
FORMS.....	8
GENERAL COMMUNICATION.....	9
CAMPER PHONE USE.....	9
Contacting Your Camper In An Emergency	9
EMERGENCIES.....	9
Evacuation Procedures.....	9
BULLYING POLICY	10
PROGRAM AREAS.....	10
MEALS & SNACKS.....	11
Special Dietary Needs	11
WHAT TO WEAR.....	12
WHAT TO BRING	12
Additional Required Items.....	12
DO NOT PACK (applies to ALL campers):	12
Lost & Found.....	12

STAFF	13
Staff Training.....	13
Staff Credentials	13
HEALTH INFORMATION	13
Daily Screenings.....	13
COVID-19 Testing.....	13
Sanitation	14
Medical Professionals.....	14
Medications	14
“Medical Holidays”	14
COVID Response Plans & Communication.....	14
CAMP STORE.....	15
ARRIVING AT CAMP	16
Health Screenings.....	16
DEPARTING CAMP	16
CAMP MAP	17



COME SOCIALIZE WITH US

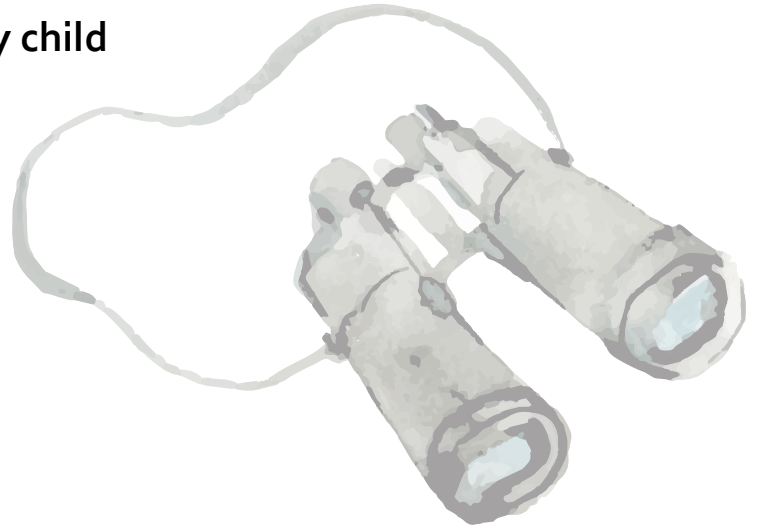
Be a camp insider, discover inspiring images and enjoy the magic of camp all year long.

@campfirefw @campeltesoro

MISSION & VISION

Camp Fire First Texas invests in North Texas communities by providing out-of-school time and outdoor learning programs for children and youth while also offering workforce development programs for early childhood educators.

We envision a community in which every child has equitable access to the learning opportunities they need to succeed and thrive in a rapidly changing world.



OUR VALUES



Inclusion

All are welcome at Camp Fire.



Data-Informed

We collect and apply data to continually improve existing - and inspire new - programming.



Growth Mindset

We believe the learning process is equally as important as the learning outcome and that talents can be improved over time.



Collaboration

We go higher together by partnering within the communities we serve.



Hands-On Learning

Learning from experience is a hallmark of all our programs.



Whole Child Approach

We recognize that social-emotional, physical, creative, and academic skills are all intertwined and equally important in learning.

OUR STATEMENT OF INCLUSION

Camp accepts you for who you are.

At Camp YOU can be YOU.

Camp shows you how to love nature, yourself and others.



Camp Fire's Statement of Inclusion: Camp Fire believes in the dignity and the intrinsic worth of every human being. We welcome, affirm, and support young people and adults of all abilities and disabilities, experiences, races, ethnicities, socio-economic backgrounds, sexual orientations, gender identities and expressions, religion and non-religion, citizenship and immigration status, and any other category people use to define themselves or others. We strive to create safe and inclusive environments that celebrate diversity and foster positive relationships.

You Belong Here!





DAY CAMP DAILY SCHEDULE

7:30 am	Drop Off
8:30 am	Activity One
9:30 am	Activity Two
10:30 am	Morning Snack
10:45 am	Activity Three
12:00 pm	Lunch
1:00 pm	Camp Store
1:30 pm	Taste Of Camp Activities
3:00 pm	Afternoon Snack
3:30 pm	Activity Four
5 - 5:45 pm	Pick-Up & Exploration Play

ACTIVITIES

Campers are grouped by age and rotate through activities.

- Morning Activities include: Outdoor Education, Nature Exploration, and Nature Crafts
- Taste of Camp Activities include: Horseback, Kayaking, Archery, and Challenge Course Low Elements

CAMP INSPIRES

Camp El Tesoro offers a wide range of activities and programs that connect campers with nature. Hiking through wooded terrain to Mt. Loma and singing songs with friends around the campfire are more than just fun activities; they are moments for campers to learn and discover. Campers try new and exciting activities, such as archery and kayaking, but it is the friendships and personal growth that keep our campers coming back each year. From the moment campers arrive, camp staff fill the day with opportunities for personal growth and a generous heap of fun.

PROGRAM INFORMATION

Campers enjoy full days of making new friends, exploring outdoors and learning new skills with different weeks of exciting nature studies, featuring art, interactive/hands on activities, outdoor adventures, all mixed with fun summer camp activities such as swimming, hiking and archery that will have your campers begging to stay all summer!

**Find more
GROWTH**



OVERNIGHT OPTION*

Campers have an opportunity to get a taste of Overnight Camp on Wednesday night. Registration and payment must be completed by Tuesday at Noon.

Campers staying overnight should pack their backpack for the day as well as a second small overnight bag. This overnight bag will be carried to the cabins on Wednesday morning and will not be available during the day. As it is just one night, we are not scheduling to take showers at camp.

Please pack only the following items in the overnight bag:

- Mess kit and dunk bag (heavy plastic plate and fork in a small mesh bag/lingerie net bag for cookout)
- Pajamas
- Toothbrush and toothpaste
- Comb or brush
- Small hand towel
- Full change of clothes
- Flashlight (check batteries)
- Blanket and sheets for twin size bed/sleeping bag
- Pillow and pillow case
- Battery operated fan (optional)

Campers will cook dinner over a campfire and have a continental breakfast on Thursday morning.

**A minimum of 7 overnight campers are required to host this option each week.*

CAMPBRAIN ACCOUNT

Logging In To Your Account

After registering your camper online, you will have a CampBrain login and password. To access your account, visit campfirefw.campbrainregistration.com and log in with your appropriate credentials. If you have forgotten your password with which you originally registered your camper, please select the "Password reset" link and follow the prompts. If you do not remember your email address, please do not create an additional account as this will cause problems with your camper's registration. If you are in need of your account email address, please contact our Customer Support Team at 817.831.2111, ext. 155. Your CampBrain account will be your primary resource for payments, documents and forms.

Cancellation Policy

Day Camp = There is a \$50 cancellation fee.

A request for a refund of your additional payments can be made, up to 14 days prior to the first day of your registered session. No refund will be made if you cancel after this time frame.

The cancellation/change request must be made through the Cancellation Form. <https://campfirefw.wufoo.com/forms/camp-el-tesoro-cancellation-change-form/>

Any unpaid balances will be automatically drafted from the card on file when closing the account.





Change Policy

Sessions can be changed, depending on availability, at no charge if done before May 1. After May 1, a fee of \$25 will be applied.

Add Overnight Option

If you didn't previously choose the option during registration, login to your CampBrain account click the 'Add campers, sessions, options' button, select the week and click Add to Cart for the overnight.



Camp Store Account

Camp El Tesoro partners with CampBrain to manage our Camp Store.

Before your child's camp session you will be sent an invitation to add store funds. You can log back in to your account at campfirefw.campbrainregistration.com. Cash is not accepted at Camp El Tesoro.



Although there is no required amount, most parents deposit \$20-\$40. Campers that have a balance in their store account greater than \$5 may only [request a refund by submitting this form](#) within 30 days of the end of your child's camp session. Unclaimed balances, and those less than \$5, will be donated to the Camp El Tesoro scholarship fund. <https://campfirefw.wufoo.com/forms/request-a-camp-store-refund/>



FORMS

CampBrain allows you to download and print or complete required forms online. Login to your CampBrain account using the email you registered with and password you selected. Once you are logged in you can select "View Details" to access your camper's dashboard where you can complete the Medical Form (includes shot records, health history and medication information), the Parent Consent Form, upload a camper photo and make any additional payments. Please ensure all forms are complete and uploaded two weeks prior to camp. You can bring shot records in-hand to the first day. All other items must be complete two weeks prior to first camp session.



GENERAL COMMUNICATION

Please let camp staff know by 9:00 a.m. if your camper will not be attending for the day at 817.989.9004.

In the event you call camp and get the voicemail, please leave a message. Your call will be returned promptly.

If you have a need that concerns your account, please call the Customer Support Team Monday through Friday, 9 a.m. – 5 p.m. at 817.831.2111, ext. 155.

CAMPER PHONE USE

The camp experience provides an opportunity for children to develop a greater sense of independence and connect to nature. Therefore, no phone is available for campers to routinely make or receive calls. A camp staff member will call you if any issues arise. **We have a strict no cell phone policy at camp.**

Contacting Your Camper In An Emergency

If you need to contact camp or get a critical message to your camper, please use the phone number below.
Camp Office: 817.989.9004

EMERGENCIES

Camp El Tesoro staff are First Aid & CPR certified. A designated emergency vehicle is on site at all times.

Each camp session a licensed medical professional is on property to coordinate camper care.

Evacuation Procedures

In the unlikely event that Camp Fire would determine a need to evacuate Camp El Tesoro, we will attempt to contact each family starting with the “lives-with” parent or guardian and then the emergency contact person. At that time, further instructions will be given as to how the evacuation will proceed. For this reason, it is truly important that we have accurate contact information for parents and emergency contact persons during your child’s camp experience.

Based on the type of emergency, Camp Fire will make a decision on the most prudent way to return campers safely to their homes. Such an emergency may require parents or emergency contact persons to pick up their child at camp, or the Camp Fire Resource Center in Fort Worth.

If the need arises, general information regarding evacuation will be posted on our Camp El Tesoro social media avenues including Facebook and Twitter.



BULLYING POLICY

We ask that parents talk with their campers about bullying before camp begins.

Encourage them to tell a staff member if they are having problems, and to be respectful of other campers. To ensure the emotional and physical well-being of all campers at camp, parents or guardians will be contacted immediately to help assist with any bullying issues.

Bullying is intentional aggressive behavior. It can take the form of physical or verbal harassment and involves an imbalance of power. For instance, a group of children can gang up on another child, or someone who is physically bigger or more aggressive can intimidate someone else.

Bullying behavior can include insulting someone (particularly about their weight or height, race, sexuality, religion or other personal traits), shoving, hitting, excluding someone or gossiping about someone. Bullying can cause a child to feel upset, afraid, ashamed, embarrassed or anxious. It can involve children of any age. Bullying behavior is frequently repeated unless there is intervention.

Bullying is not tolerated at Camp El Tesoro.



PROGRAM AREAS

The Louisa Haun Main Lodge is the headquarters for Nature Day Camp programs. Each camper will have an assigned crate to hold their backpacks for the day.

[Watch our virtual tour video on YouTube.](#)

Day Campers spend the mornings in and around Louisa Haun Main Lodge for their outdoor studies. Afternoons are spent away from Louisa Haun Main Lodge for planned camp activities around Camp El Tesoro

Day Campers will return to the Louisa Haun Main Lodge at 5:00 p.m. for free play and pick-up.

*The best week
of summer*



MEALS & SNACKS

Our professional food service staff serve delicious, nutritious, well-balanced meals in our dining hall.

Lunch includes a hot meal served family-style by group and a salad bar.

Part of the camp experience is participating in meal set-up and clean-up. Every child takes a turn and shares in this responsibility.

El Tesoro is a nut-free facility.

Light and healthy snacks will be provided every morning and afternoon.

On Wednesday Overnights campers participate in a cookout. They help counselors prepare dinner, cook it over a campfire and enjoy a meal outdoors.

Special Dietary Needs

Campers with special dietary needs will be properly accommodated during every meal.

Please contact Dianne McKinley, Food Service Manager, at Dianne@CampFireFW.org, at least two weeks prior to your campers arrival with specific dietary instructions or questions.



CAMP LIFE



WHAT TO WEAR

- Comfortable play clothes
- Footwear - Closed toe tennis shoe (flat, no heel) with socks (mandatory)
- Sunscreen (apply when getting dressed for camp each day)
- Hat or Cap

Because Camp El Tesoro is a natural environment, appropriate footwear must be worn at all times. Closed toe shoes with socks (tennis shoes) must be worn during all challenge course activities, including both high- and low-elements, and during sports and games activities. Boots with a one inch heel must be worn inside the Equestrian Center Arena (riders and non-riders alike) and on riding trails.

For all other activities, campers may wear closed toe shoes with socks or all-terrain sandals (such as Chaco, Teva and Keen branded footwear). Sandals must have a rubber sole with a thickness of at least one-half inch (0.5") and a heel strap to keep the shoe securely fastened at the foot. Flip Flops may only be worn to and from the pool. Swim shoes are optional and may be worn at the pool, creek, or river.

Staff have the right to determine what footwear is appropriate and can ask a camper to change at any time.

If campers choose to bring only one pair of shoes, that pair should be closed toe (tennis shoes). Boots are available at the Equestrian Center if campers do not have their own.

WHAT TO BRING

Every day, campers should bring a small backpack to hold the following:

- Sunscreen (to reapply during the day)
- Swim suit (athletic swim wear appropriate for swimming, jumping, running and playing)
- Pool towel
- All-terrain sandals, aqua shoes or old tennis shoes for swimming pool/creek walking
- Change of clothes, socks (in large zip baggie)
- Large-mouth water bottle
- Insect repellent
- Personal small hand sanitizer to keep in backpack

**A note on modesty: Simple, conservative and modest clothing is best for the active week at camp.*

Everything should be marked with the camper's name. Your camper will be outside and active at camp. **Please send older clothes, towels, etc. New items are not recommended.**

Additional Required Items

Special items may be requested in advance, but are not required every day:

- Aqua shoes for swimming pool/creek walking/canoeing
- Blue jeans and boots for horseback riding (Boots and jeans are available at the Equestrian Center if campers do not have their own.)

DO NOT PACK (applies to ALL campers):

- Electronics
- Cell Phone
- Smart Watches (with Internet capabilities)
- MP3 player
- eReader
- DVD player
- Video Games
- Radio
- Food
- Money
- Valuables/Jewelry
- Silly String
- NERF & Blaster Toys with foam darts, discs or balls

Contraband Items (possession of these items will result in the camper being sent home without a refund)

- Alcohol
- Illegal Drugs
- Vaping/e-cigarettes devices
- Knives
- Matches, lighters
- Fireworks/Sparklers (this includes the 4th of July week)

Lost & Found

All lost and found items are gathered throughout the week. Please be sure to ask your camper to look through the lost and found prior to leaving camp each day.

If you get home and realize something is lost, please call the El Tesoro camp office at 817.989.9004. No articles are held after August 15.

STAFF

Staff Training

Prior to camp, all staff participate in intensive training that includes risk management, emergency procedures, positive behavior management, abuse prevention and recognition, and teaching activities. All staff are certified in First Aid and CPR. Activity leaders are certified in one or more of the following: lifeguarding, archery, canoe/kayak and horseback riding.

Vaccination is strongly encouraged for anyone able to access it prior to camp.

Staff Credentials

Camp El Tesoro's staff are dedicated to making your child's camp experience memorable, fun and safe. We require counselors to be at least 18 years old (activity directors are 21 and older). All staff go through an extensive screening process that includes interviews, personal reference checks and annual background checks.

HEALTH INFORMATION

Important: The health and safety of your child is our primary concern. To ensure our camp health care providers have the information necessary in advance, the Medical Form must be filled out and submitted online through CampBrain two weeks prior to your child's arrival at camp.

Daily Screenings

Upon arrival to camp each day, all campers will be screened by a designated camp staff member for any illness. After the screening is completed, only the camper(s) will be permitted to exit the vehicle. Staff members will also self-screen for symptoms daily.

COVID-19 Testing

Day campers will NOT be required to provide a negative COVID-19 test.



Sanitation

In addition to regular handwashing and hygiene, hand sanitizer stations will be strategically placed throughout camp – in each cabin, as well as in each program area, and other high traffic areas. Program areas and materials will be sanitized in between uses. High touch areas within cabins and program areas (such as doorknobs, tables, light switches, etc.) will be cleaned and sanitized daily at the beginning of each day.

Medical Professionals

Each camp session a licensed medical professional is on property to administer medications, make preliminary medical assessments and coordinate camper care. This includes: (MD, DO, RN, NP, LVN, EMT, CNA)

Contagious Diseases, Fractures, Breaks & Stitches

Children with contagious diseases will not be allowed to attend camp until they are free of the disease, or until he/she is no longer contagious, as determined by a doctor.

If your camper has a fever, they must be fever free for 24 hours before returning to camp.

Camper with fractures, breaks, or stitches must have written permission from their physician to attend camp, as well as permission from the camp director.

Head Lice

Head lice can become an issue anytime you gather children together at school, child care or camp. It is not indicative of uncleanliness and anyone can get them. Because lice are easily transmitted and require several steps to eliminate, we cannot keep children at camp who are found to have nits or head lice.

To help ensure your camper will have a positive experience at camp, it is your responsibility to check and, if necessary, treat your child for nits or head lice the week before camp begins. If nits or head lice are discovered while your child is at camp, your camper will be sent home.

Medications

If you will be sending any over-the-counter or prescription medications or vitamins, please follow the instructions below:

1. Complete the Health Form through your CampBrain account. Please include all medication and/or vitamins being sent to camp. Directions on the container label must match your written directions on the Health Form.
2. Regulations require prescribed medications and vitamins be sent in their original containers with the original pharmacy label. Prescription medication must be prescribed to the camper and will be dispensed according to the prescribed dosage. Your local pharmacy can provide you with an extra container if needed.
3. Camp health staff provides over-the-counter medication such as acetaminophen, ibuprofen, antihistamines and cough medicine. Please DO NOT send these items with your child to camp.
4. Only send the exact dosage, plus two extra, that your camper will need during his/her session. Exact directions for dispensing the medicine along with the time that it should be taken must be written on the Health Form.
5. Note your child's medications on the online Health Form through your CampBrain account. You must update/provide immunization history on the online Health Form, OR bring a COPY of your child's current shot record to leave at camp.

“Medical Holidays”

We strongly discourage parents whose children are on medication throughout the year from putting them on “medical holiday” while they are at camp. It is not always in the child's best interest to take time off from his/her medication. We will be as accommodating as possible with your physician's recommendation.

COVID Response Plans & Communication

Camp El Tesoro has put multiple effective response plans in place. In the event someone does fall ill at camp, we have established multi-staged quarantine and isolation procedures that will allow us the time to determine the best response, including whether the ill camper or staff member will be able to rejoin the camp population.



CAMP STORE

Day Campers enjoy visits to the camp store each week. Items in the store include small snacks, drinks, El Tesoro clothing items, nature books and souvenirs.

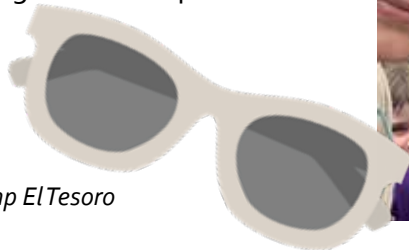
Add money to your campers' store account by logging into your CampBrain account. Campers only need to give their name to access the funds you have deposited.

campfirefw.campbrainregistration.com

See the following list for a price range of store items:

- T-shirts: \$5-\$24
- Other apparel: \$4-\$45 for bandannas, ball caps, hoodies, rain jackets
- Essentials: \$4-\$22 for sunglasses, travel toothbrush, water bottle, etc.
- Cabin upgrades: \$8-\$45 for laundry bag, blankets, hammocks
- Snacks: \$1-\$4 for sports drinks, beef jerky, chips, ice cream bars, slushies, etc.

CASH IS NOT ACCEPTED at Camp El Tesoro. Please do not send your camper with any form of cash. All purchases must be made through their camp store account.



ARRIVING AT CAMP

Curbside check-in happens in the main parking lot.

First Day: Please arrive at 7:30 a.m. for check-in and to meet the staff. Remember to bring a copy of your campers immunization record if not already provided.

Every Day:

- Campers arrive between 7:30 and 8:00 a.m. If you will be arriving later please call 817.989.9004.
- Programs will begin at 8:00 a.m.
- Only essential individuals (i.e., Campers, and one parent/guardian) should come to the check-in area to avoid crowding.

Health Screenings

- Upon arrival to camp each day, all campers will be screened by a designated camp staff member for any known COVID-19 symptoms. Campers will then cross the swinging bridge to start their day!

DEPARTING CAMP

Planned activities will end at 5:00 p.m. each day.

Parents/guardians will remain in their vehicle upon arrival to the camp parking lot. Upon arrival, without exiting their vehicle, parents will provide photo ID to a designated staff member.

Adults in charge of pick up: please remember to bring your photo ID and have it ready to show the counselor at sign out.

- Check out begins at 5:00 p.m.
All campers must be picked up by 5:45 p.m.
- Arrangements for earlier pick up times should be made in advance with the camp staff.
- Arrangements for another adult picking up your camper should be made in advance with the camp staff. The adult must be named on the registration form and will be required to show their driver's license before picking up your camper.



CAMP MAP

