

Camp Fire

# Camp El Tesoro

Camper Guide 2024  
Overnight Camp

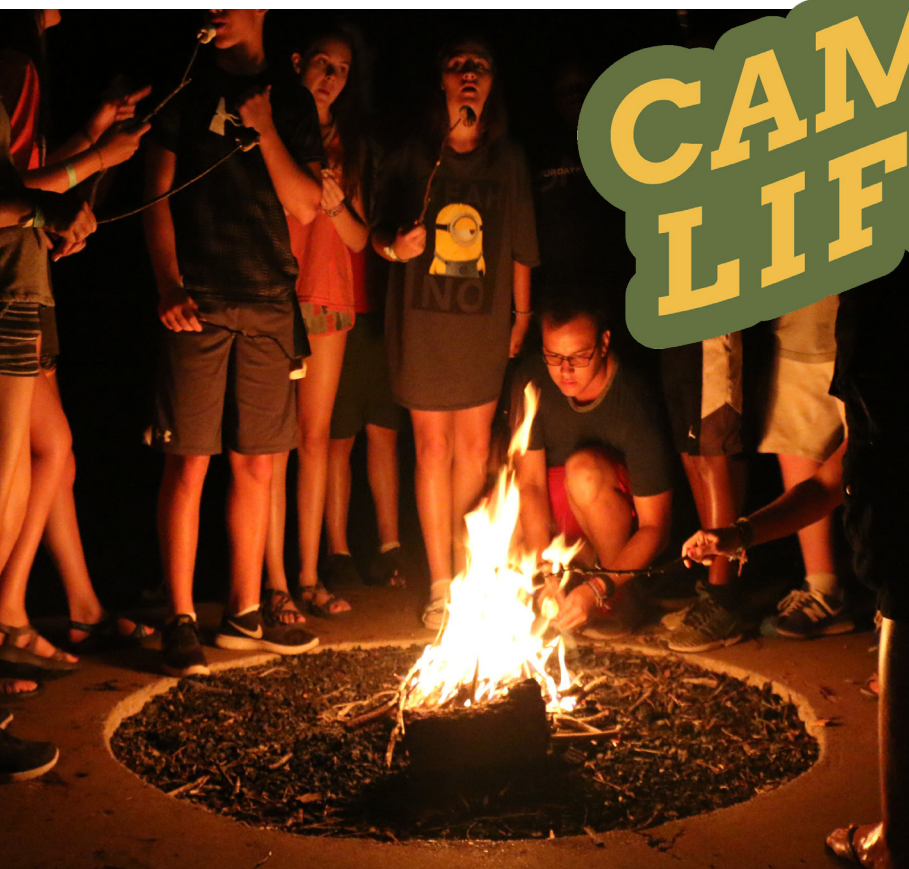




Welcome! When you chose Camp Fire Camp El Tesoro, you have chosen to be a part of something greater than yourself. You join four generations of campers who have explored the outdoors, built new relationships, and created fun, memorable and life-changing experiences at El Tesoro. It is not just your child, but you, too, have become part of our family of campers and staff members who will always go the extra mile to make sure each child feels included, safe and connected to nature. We are committed to providing your family with an amazing and positively unforgettable summer experience. Whether it's through archery, challenge course, horseback riding, canoeing, nature studies or any of our other activities, we promise to do our best to show your child just how great a camp experience can be.

We hope this guide answers all of your questions. If you require any further details or would like to speak with a member of our staff, please call our office at 817.831.2111, ext. 155.

We can't wait to see you come across the swinging bridge!



# CONTACT US



## Camp El Tesoro

Camp Office: 817.989.9004  
7710 Fall Creek Hwy  
Granbury TX 76049

## Camp Fire First Texas

Main Office: 817.831.2111  
Fax: 817.831.5070

## Customer Support Team

[CampET@CampFireFW.org](mailto:CampET@CampFireFW.org)  
817.831.2111, ext. 155

## Jessica Simpson

Assistant Camp Director  
[JessicaS@CampFireFW.org](mailto:JessicaS@CampFireFW.org)  
817.831.2111, ext. 147

## Bill Zurcher

Overnight Camp Director  
[Bill@CampFireFW.org](mailto:Bill@CampFireFW.org)  
817.989.9004

## Dianne McKinley

Food Service Manager  
[Dianne@CampFireFW.org](mailto:Dianne@CampFireFW.org)  
817.989.9004

## Jen Smith

Interim Vice President of Outdoor  
[Jen@CampFireFW.org](mailto:Jen@CampFireFW.org)  
817.831.2111, ext. 131

## Brian Miller

Interim President & CEO  
[Brian@CampFireFW.org](mailto:Brian@CampFireFW.org)  
817.831.2111, ext. 104

Camp El Tesoro has been accredited by the American Camp Association for more than 50 years. Every 3 years, the camp demonstrates to ACA visitors that we meet up to 300 standards in health care, food service, site and facilities, transportation, administration, emergency management, human resources, program quality, and safety for activities such as waterfront, horseback riding, challenge course, and more.



# CONTENTS

MISSION & VISION .....	4
OUR VALUES .....	4
OUR STATEMENT OF INCLUSION .....	5
SAMPLE CAMP SCHEDULES .....	6
CAMP INSPIRES.....	6
PROGRAM INFORMATION .....	6
ACTIVITY SELECTION & PROGRAMS .....	7
Activity Selection: .....	7
Torchbearer Program: .....	7
Inclusion Program: .....	7
Counselor-in-Training Program: .....	7
13-Day Sessions Weekend Activities: .....	8
SWIM TEST .....	8
CAMPBRAIN account.....	8
Logging In To Your Account .....	8
Cancellation Policy & Refunds .....	8
Change Policy .....	8
FORMS.....	9
Fill Out/Upload Online Two Weeks Prior .....	9
CAMP PHOTOS .....	10
Photo Gallery .....	10
VISITING CAMP EL TESORO.....	10
CAMPER PHONE USE.....	10
Contacting Your Camper In An Emergency .....	10
PARENT COMMUNICATION .....	11
BULLYING POLICY .....	11
SENDING MAIL TO YOUR CAMPER.....	12
Packages & Mail at Drop Off.....	12
Packages & Mail May Be Sent To .....	12
Cabin Notes Emails .....	12
Cabin Units .....	13
Staff to Camper Ratios .....	13
Cabin Buddies/Coming with Friends.....	13
MEALS .....	14
STAFF .....	15
Staff Training.....	15
Staff Credentials .....	15
CAMP STORE.....	16
2024 PACKING LIST & TIPS.....	18
Lost And Found .....	19
DO NOT PACK (applies to ALL campers): .....	19
EMERGENCIES.....	20

HEALTH INFORMATION .....	21
Sanitation .....	21
Daily Wellness Checks .....	21
Medical Professionals.....	21
The Heat .....	21
Contagious Diseases, Fractures, Breaks & Stitches .....	21
Vaccinations .....	21
Head Lice.....	21
Medications .....	22
"Medical Holidays" .....	22
Illness & Accidents.....	22
Homesickness .....	22
BEFORE CAMP .....	23
COVID-19 Testing.....	23
ARRIVING AT CAMP .....	23
Times & Days .....	23
Arrival Health Screening .....	23
Trunks & Luggage .....	23
Fill Out/Upload Online Two Weeks Prior .....	23
What To Wear & Bring On Arrival .....	23
DEPARTING CAMP .....	24
Times & Days .....	24
Closing Ceremony .....	24
Tenure Walking Staffs .....	24
Luggage.....	24
Lost & Found.....	24
CAMP MAP .....	25



## COME SOCIALIZE WITH US

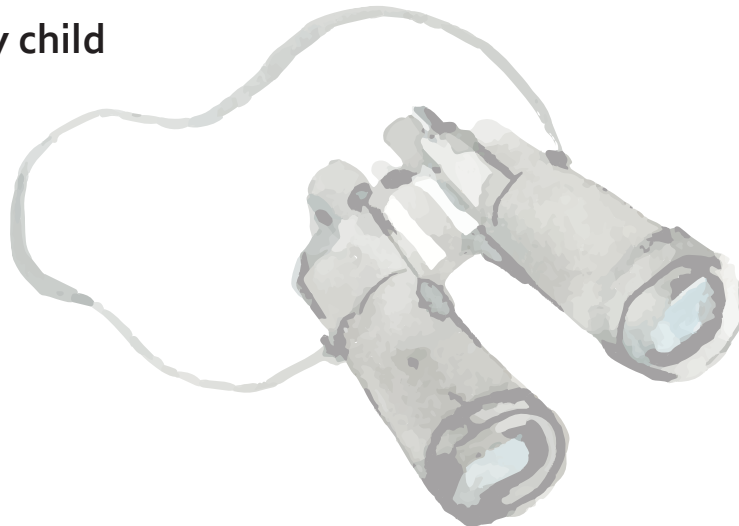
Be a camp insider, discover inspiring images  
and enjoy the magic of camp all year long.

@campfirefw @campeltesoro

## MISSION & VISION

Camp Fire First Texas invests in North Texas communities by providing out-of-school time and outdoor learning programs for children and youth while also offering workforce development programs for early childhood educators.

**We envision a community in which every child has equitable access to the learning opportunities they need to succeed and thrive in a rapidly changing world.**



## OUR VALUES



### Inclusion

All are welcome at Camp Fire.



### Data-Informed

We collect and apply data to continually improve existing - and inspire new - programming.



### Growth Mindset

We believe the learning process is equally as important as the learning outcome and that talents can be improved over time.



### Collaboration

We go higher together by partnering within the communities we serve.



### Hands-On Learning

Learning from experience is a hallmark of all our programs.



### Whole Child Approach

We recognize that social-emotional, physical, creative, and academic skills are all intertwined and equally important in learning.



## OUR STATEMENT OF INCLUSION

Camp accepts you for who you are.

At Camp YOU can be YOU.

Camp shows you how to love nature, yourself and others.



Camp Fire's Statement of Inclusion: Camp Fire believes in the dignity and the intrinsic worth of every human being. We welcome, affirm, and support young people and adults of all abilities and disabilities, experiences, races, ethnicities, socio-economic backgrounds, sexual orientations, gender identities and expressions, religion and non-religion, citizenship and immigration status, and any other category people use to define themselves or others. We strive to create safe and inclusive environments that celebrate diversity and foster positive relationships.

*You Belong Here!*



## SAMPLE CAMP SCHEDULES

6:30 am	Staff Rise
7:00 am	Campers Rise
8:00 am	Breakfast followed by Flag Ceremony
	Activity One
9:00 am	Activity Two
10:15 am	Activity Three
11:30 am	Lunch
12:45 pm	Rest Time
1:40 pm	Free Swim or Cabin Activity, Snack at Camp Store
3:00 pm	Free Swim or Cabin Activity, Snack at Camp Store
4:30 pm	Free Swim or Cabin Activity, Snack at Camp Store
6:00 pm	Dinner followed by Flag Ceremony
	All Camp or Unit Activity
7:15 pm	Middle & Upper Camp Evening Activity
8:00 pm	Lower Camp Showers
	Middle Camp Showers
8:30 pm	Lights Out Lower Camp
9:00 pm	Lights Out Middle Camp
9:30 pm	Upper Camp Showers
9:00 pm	Upper Camp Showers
10:00 pm	Lights Out Upper Camp

## CAMP INSPIRES

Camp El Tesoro includes a wide range of programs that connect campers with nature. Hiking through wooded terrain to Mt. Loma, singing songs with friends around the campfire and zip lining on the challenge course are more than just fun activities; they are moments for campers to learn and discover. Campers try new and exciting activities, such as archery and kayaking, but it is the friendships and personal growth that keep our campers coming back each year. From the moment campers wake up until the moment they go to sleep, camp staff fill the day with opportunities for personal growth and a generous heap of fun.

Find more  
GROWTH

## PROGRAM INFORMATION

Camp El Tesoro offers age appropriate activities that develop social and emotional confidence in campers while they have fun in the outdoors and make new friends. Campers will participate in a 'taste of camp' assortment of activities throughout the week.

Horsemanship	Kayaking & Canoeing
Outdoor Cooking	Ceramics
Sports & Games	Archery
Drama	Arts & Crafts
Swim & Water Games	GaGa Ball
Group Games	Hiking
Outdoor Living Skills	Astronomy
Low Challenge Course	Singing & Music
High Ropes Challenge Course	Woodshop

*\*Activities subject to change*





## ACTIVITY SELECTION & PROGRAMS

### Activity Selection:

Camp El Tesoro offers age appropriate activities that develop social and emotional confidence in campers while they have fun in the outdoors, learn new skills, and make new friends.

**Campers entering grades 1-4** who are in their 1st or 2nd year of attending El Tesoro will participate in a 'Taste of Camp' on Monday-Wednesday, trying out nine\* morning activities before selecting their three favorites to try again on Thursday and Friday.

**Campers entering 5th grade and above or who have already completed two summers at El Tesoro**, will select six activities for the week (Monday/Wednesday and Tuesday/Thursday schedule) when they arrive at camp on Sunday afternoon. Friday mornings will feature all-camp activities. We encourage campers to select their own activities to help develop the sense of independence they will experience while at camp.

### Torchbearer Program:

All 9th and 10th grade campers attending 13-day sessions have the opportunity to participate as a Torchbearer for one of their selected camp activities. Being a Torchbearer allows campers to participate in the selected activity twice each day. During their second week as a Torchbearer, campers get to help lead the activity to prepare them to become a future program leader at camp. Campers will learn more about the program and may sign up for their Torchbearer choice upon arrival at camp.

### Inclusion Program:

Camp Fire Camp El Tesoro can include up to three campers each week with mild intellectual or developmental disabilities to join the fun opportunities for personal growth at camp. \*Please note, this program requires a supplemental application form.

### Counselor-in-Training Program:

El Tesoro's Counselor-in-Training (CIT) program is a four-week commitment for two consecutive summers. This program is available to campers who have completed their sophomore year of high school. CITs learn and build leadership, communication and program delivery skills. An application and interview process is required for admittance into the program.





### 13-Day Sessions Weekend Activities:

Campers who stay for two-weeks participate in specialty programming from Friday night through Sunday morning called, "Color Wars." This is a friendly, low-stakes competition. Campers are divided into two teams (or colors) and then compete for points in activities such as sack races and chess to giant Jenga or cardboard boat races.

No special items are required. However, it is advised to pack a red and/or blue shirt or bandanna for your camper.

### SWIM TEST

A mandatory swim test is conducted after all the campers in a cabin check in.

To pass the test, a camper must successfully complete two phases:

- **Phase I:** Swim across and back (the full width of the pool, 15 yards), without touching the bottom.
- **Phase II:** Tread water for one minute in the deep end, then swim one width of the pool.

During the swim test, trained and certified lifeguards are on duty. Campers unable to pass the swim test are required to stay in the shallow end of the pool during free swim.

### CHAPEL

While we recognize and are proud of our religiously-rooted historic beginnings, Camp Fire and Camp El Tesoro are not religiously affiliated; however, because of our strong belief in tradition and history, some aspects of camp may involve language that could be perceived as religious. For example, campers will say grace before every meal in the form of a song. Two-week campers will attend a reflection service at our outdoor chapel area on Sunday morning. During this time, campers are asked to reflect on their week and discuss how they can grow as leaders.



### CAMPBRAIN ACCOUNT

#### Logging In To Your Account

After registering your camper online, you will have a CampBrain login and password. To access your account, visit [campfirefw.campbrainregistration.com](https://campfirefw.campbrainregistration.com) and log in with your appropriate credentials. If you have forgotten your password with which you originally registered your camper, please select the "Password reset" link and follow the prompts. If you do not remember your email address, please do not create an additional account as this will cause problems with your camper's registration. If you are in need of your account email address, please contact the Customer Support Team at 817.831.2111, ext. 155. Your CampBrain account will be your primary resource for payments, documents, forms and camp store account.







## Cancellation Policy & Refunds

Your \$150 deposit is nonrefundable/nontransferable.

A request for a refund of your additional payments can be made by completing the [Cancellation & Change Form](#), up to 14 days prior to the first day of your registered session. No refund will be made if you cancel after this time frame.

Once the cancellation/change request is processed, a confirmation will be sent to the email on file.

Any unpaid balances will be automatically drafted from the card on file when closing the account.

We process cancellations in the order they are received.

## Change Policy

Sessions can be changed, depending on availability, at no charge if done before May 1. After May 1, a fee of \$25 will be applied.

## Camp Store Account

Camp El Tesoro partners with CampBrain to manage our Camp Store.

Before your child's camp session you will be sent an invitation to add store funds. You can log back in to your account at [campfirefw.campbrainregistration.com](https://campfirefw.campbrainregistration.com). Cash is not accepted at Camp El Tesoro.

Although there is no required amount, most parents deposit \$20-\$40. Campers that have a balance in their store account greater than \$5 may only [request a refund by submitting this form](#) within 30 days of the end of your child's camp session. Unclaimed balances, and those less than \$5, will be donated to the Camp El Tesoro scholarship fund. <https://campfirefw.wufoo.com/forms/request-a-camp-store-refund/>







## FORMS

CampBrain allows you to download and print or complete required forms online. Log in to your CampBrain account, visit the "Registration Details" to view, download or complete the required forms.

### Fill Out/Upload Online Two Weeks Prior

Fill out online two weeks prior to arrival at Camp:

- **Health History Form**, including Medication Information and Immunization Records
- **Parent Consent Form**
- **Physician's Form** (annual physical signed by doctor)

## CAMP PHOTOS

### Photo Gallery

SmugMug offers camp parents and relatives a glimpse into camp life by posting photos in a password-protected online photo gallery. When your child is attending camp, you can view the pictures by session to see what kind of fun they are having.

We love camp photos as much as you do but remember this – the safety and well-being of your child is our number one priority. No matter what. If it came down to helping a child with an activity and stepping in to ensure safety or taking a photo – we are going to pick safety every single time. Sometimes even our photographers put the camera down to help a child be more 'in the moment'. Photos might last forever, but so do memories made at camp – and that's something we're committed to building through personal interactions with our well-trained staff.

### [2024 Overnight Camp Photo Gallery](#)

*Gallery password will be communicated in email two weeks prior to your camper's session.*

### Photo Use

To respect all children's privacy, we ask families to follow these guidelines and copyright to ensure our children, youth and staff remain safe.

As a guardian or guest accessing SmugMug or other Camp Fire First Texas/Camp El Tesoro provided photos, you must abide by the "Personal Use" criteria of our copyright. In addition, we ask anyone accessing photographs to know it is always best to post pictures or videos of only your own child. If you access pictures or videos of multiple children that you would like to share on social platforms, it is best to seek parental permission or use in the nature and spirit it was intended. Any violation could result in legal action.

## VISITING CAMP EL TESORO

During summer camp, the campers are very busy with activities and making new friends. Outside visitors are not allowed during a camp session. If there is an emergency and you need to pick up your camper, please contact the Camp Director before arriving at camp.

## CAMPER PHONE USE

The camp experience provides an opportunity for children to develop a greater sense of independence and connect to nature. Therefore, no phone is available for campers to routinely make or receive calls. A camp staff member will call you if any issues arise. We have a strict no cell phone policy at camp.



## Contacting Your Camper In An Emergency

If you need to speak to the Camp Director or get a critical message to your camper, please use the phone number below.

Camp Office: 817.989.9004

## PARENT COMMUNICATION

Staff are trained to handle day-to-day situations that may arise during your camper's stay at Camp El Tesoro in a safe and caring manner. Instances when you might expect to hear from camp staff for consultations or to arrange to pick up your camper may include:

- Behavioral issues including bullying or verbal or physical aggression.
- Possession of contraband or violation of other Camp policies.
- Severe homesickness.
- Illness, including vomiting or respiratory symptoms with a fever over 100°F.
- When your child receives more than basic medical care.\*
- Emergencies or evacuations.

\* Should your child require medical care off-site we will do our best to reach you before we leave camp. A cell phone will accompany your child and staff so you may be in contact with your child.

## BULLYING POLICY

We ask that parents talk with their campers about bullying before camp begins.

Encourage them to tell a staff member if they are having problems, and to be respectful of other campers. To ensure the emotional and physical well-being of all campers at camp, parents or guardians will be contacted immediately to help assist with any bullying issues.

Bullying is intentional aggressive behavior. It can take the form of physical or verbal harassment and involves an imbalance of power. For instance, a group of children can gang up on another child, or someone who is physically bigger or more aggressive can intimidate someone else.

Bullying behavior can include insulting someone (particularly about their weight or height, race, sexuality, religion or other personal traits), shoving, hitting, excluding someone or gossiping about someone.





Bullying can cause a child to feel upset, afraid, ashamed, embarrassed or anxious. It can involve children of any age. Bullying behavior is frequently repeated unless there is intervention.

Bullying is not tolerated at Camp El Tesoro.

## SENDING MAIL TO YOUR CAMPER

Allow enough time for the mail to reach your camper before the end of their session.

**Please do not send any food to campers.** Food in cabins invites unwelcome visitors (animals!). Packages received after the camper's session has ended will be returned. **The last day campers receive mail is lunch on Friday.**

When sending care packages, consider items such as: books, cards, address books, small stuffed animals, and/or items to share with the cabin. [Check out our care package blog for fun ideas.](#)

## Packages & Mail at Drop Off

Care packages may be dropped off at arrival with the name of your camper, and the date you would like the package to be delivered. Please look for the designated drop off location for packages at camper drop off.

## Packages & Mail May Be Sent To

Camper's Name

Camp Session (example: A, B, BC - look at your registration for the letter)

Camp El Tesoro

7710 Fall Creek Hwy.

Granbury, TX 76049

## Cabin Notes Emails

This one-way communication is just like sending a letter except it will be delivered a bit quicker and no stamp or payment is required! It will help delivery if you know your camper's SESSION and CABIN NAME.

Simply use this link and start typing!

<https://campfirefw.wufoo.com/forms/cabin-notes/>

CabinNotes should NOT be sent before your camper arrives at camp. The last day campers receive Cabin Notes is lunch on Friday.







## CABIN ACCOMMODATIONS

Campers stay in air-conditioned modern, enclosed cabins set in 3 units in camp. Each cabin has the capacity to sleep ten campers and two staff members. Each bed space has its own outlet for campers who bring fans. Private bathrooms are located inside the cabins with two toilets, three showers, and three sinks. Each cabin is ADA accessible.



**Air-conditioning units have been installed in all cabins.**

[Watch our virtual tour video.](#)

Campers are grouped in cabins by grade level and gender.

### Cabin Units

Lower Camp Grades 1st - 5th  
Middle Camp Grades 6th - 8th  
Upper Camp Grades 9th - 10th

### Staff to Camper Ratios

CAMPER AGE	STAFF:CAMPER
6-8	1:6
9-14	1:8
15+	1:10

### Cabin Buddies/Coming with Friends

You can request up to two "cabin buddies" when you register. Requests must be the same gender, in the same age-ranges of camp and mutually requested. We try our best to accommodate cabin buddy requests. Cabin assignments are made the week prior to your child arriving at camp.





## MEALS

Our professional food service staff serve delicious, nutritious, well-balanced meals in our dining hall.

Camp El Tesoro provides three meals a day.

- For breakfast we offer a hot meal line as well as a variety of cereal, yogurt and fruit.
- Lunch and dinner include a hot meal served family-style by cabin and a salad bar.

Part of the camp experience is participating in meal set-up and clean-up. Every child in a cabin takes a turn and shares in this responsibility.

On Wednesday nights campers participate in Dessert Cookout - with the counselors help they will prepare a dessert and cook it over a campfire.

El Tesoro is a nut-free facility.



## Special Dietary Needs

Campers with special dietary needs will be properly accommodated during every meal. Please contact Dianne McKinley, Food Service Manager, at [Dianne@CampFireFW.org](mailto:Dianne@CampFireFW.org), at least two weeks prior to your campers arrival with specific dietary instructions or questions.





## STAFF

Camp Fire believes in the power of relationships. At Camp El Tesoro, staff are not just employees - they are partners in caring for the hundreds of boys and girls that stay with us each summer.

We do more than roast marshmallows, sing camp songs, climb the tower, hike trails and paddle the lake. We encourage youth to accept challenges, inspire their curiosity, find their spark, share our hearts and sometimes hold the hand of a homesick child to see them blossom into a camper that can't wait to come back next year.

Camp Fire welcomes and embraces all youth of diverse cultures, beliefs, experiences, and identities. We are committed to creating a culturally-responsive, inclusive, and safe environment for all children, families and staff. Camp Fire First Texas is an Equal Opportunity Employer. Employment decisions are made without regard to race, age, religion, color, gender, gender expression and identification, sexual orientation, national origin, physical or mental disability, marital or veteran status, or any other classification protected by law.

## Staff Training

Prior to camp, all staff participate in an intensive training that includes risk management, emergency procedures, positive behavior management, abuse prevention and recognition, and teaching activities. All staff are certified in first aid and CPR. Activity leaders are certified in one or more of the following: lifeguarding, archery, canoe/kayak, challenge course and horseback riding.

## Staff Credentials

Camp El Tesoro's staff are dedicated to making your child's camp experience memorable, fun and safe. We require counselors to be at least 18 years old (activity directors are 21 and older). All staff go through an extensive screening process that includes interviews, personal reference checks and annual background checks.







## CAMP STORE

Each camper will have the opportunity to purchase merchandise from the Camp Store once per week. Campers will be able to purchase snacks from the Camp Store every afternoon.

Add money to your campers' store account by logging into your CampBrain account. Campers only need to give their name to access the funds you have deposited.

[campfirefw.campbrainregistration.com](http://campfirefw.campbrainregistration.com)

See the following list for a price range of store items:

- T-shirts: \$5-\$24
- Other apparel: \$4-\$45 for bandannas, ball caps, hoodies, rain jackets
- Essentials: \$4-\$22 for sunglasses, travel toothbrush, water bottle, etc.
- Cabin upgrades: \$8-\$45 for laundry bag, blankets, hammocks
- Snacks: \$1-\$4 for sports drinks, beef jerky, chips, ice cream bars, slushies, etc.

**CASH IS NOT ACCEPTED** at Camp El Tesoro. Please do not send your camper with any form of cash. All purchases must be made through their camp store account.









## 2024 PACKING LIST & TIPS

Packing for camp is the start of your child's independent camp experience. Please have your child participate in packing for camp so they know where to find their clothing and other items. Parents should confirm all packed items are approved for camp. We encourage you to pack your items in a footlocker/trunk rather than a suitcase or duffel bag. Please do not send clothing in plastic trash bags. **Clothing, accessories and footlockers should be marked with your camper's name (iron-on labels, permanent marker).**

**Your camper will be outside and active at camp. Please send older clothes, towels, etc.** New items are not recommended. Laundry facilities are not available for two-week campers. Please pack enough clothing for the full session.



### CLOTHING\*

- \_\_\_ Any color shirts for each day
- \_\_\_ Any color shorts for each day
- \_\_\_ Jeans or long pants (1 or 2 pair for Equestrian activity)
- \_\_\_ Underwear
- \_\_\_ Pajamas
- \_\_\_ Jacket or light sweater
- \_\_\_ Clothes for Thursday night dance (casual attire, not athletic wear, not applicable to 4-day campers)

### SWIMGEAR

- \_\_\_ Swim suit (Athletic swim wear appropriate for swimming, jumping, running and playing - one piece, tankinis, rash guards are recommended)
- \_\_\_ Pool towel

*\*A note on modesty: Simple, conservative and modest clothing is best for the active week at camp.*

### BEDDING

- \_\_\_ Sheets for twin size bed
- \_\_\_ Blanket(s)
- \_\_\_ Pillow and pillow case

### BATH

- \_\_\_ 2 Bath towels
- \_\_\_ 2 Washcloths
- \_\_\_ Personal small hand sanitizer to keep in backpack
- \_\_\_ Toiletries in a shower caddy or zippered bag including: toothbrush & toothpaste, soap, shampoo, sunscreen, brush/ comb, deodorant, insect repellent, hair accessories, etc. NO aerosols.

### FOOTWEAR

Because Camp El Tesoro is a natural environment, appropriate footwear must be worn at all times. Closed toe shoes with socks (tennis shoes) must be worn during all challenge course activities, including both high- and low-elements, and during sports and games activities. Boots with a one inch heel must be worn inside the Equestrian Center Arena (riders and non-riders alike) and on riding trails.

For all other activities, campers may wear closed toe shoes with socks or all-terrain sandals (such as Chaco, Teva and Keen branded footwear). Sandals must have a rubber sole with a thickness of at least one-half inch (0.5") and a heel strap to keep the shoe securely fastened at the foot.

Flip Flops may only be worn to and from the pool from cabins, and in the showers. Swim shoes are optional and may be worn at the pool, creek, or river.

Staff have the right to determine what footwear is appropriate and can ask a camper to change at any time.

If campers choose to bring only one pair of shoes, that pair should be closed toe (tennis shoes). Boots are available at the Equestrian Center if campers do not have their own.

- \_\_\_ Socks for each day
- \_\_\_ Closed toe tennis shoe or light hiking boots (mandatory)
- \_\_\_ All-terrain sandals (optional)
- \_\_\_ Flip Flops (1 pair) for showers and pool (optional)
- \_\_\_ Aqua shoes or old tennis shoes for swimming pool/ creek walking/canoeing (optional)
- \_\_\_ Cowboy boots with a 1" heel for riding (optional, loaners available)
- \_\_\_ Rain boots (optional)





## EQUIPMENT

- \_\_\_ Water bottle 32oz heavy duty (wide mouth is easier to fill with ice)
- \_\_\_ Small electric fan (power outlet at each bed)
- \_\_\_ Small backpack – carry in hand on arrival (drawstring backpacks are discouraged)
- \_\_\_ Dirty clothes bag with name label (NO plastic bags)
- \_\_\_ Raincoat/poncho
- \_\_\_ Flashlight (with extra batteries)
- \_\_\_ Tenure Walking Staff

## OPTIONAL ITEMS

- \_\_\_ Pens or pencils
- \_\_\_ Postcards, stationery, stamped envelopes (pre-addressed for younger campers)
- \_\_\_ Friend from home (the stuffed kind)
- \_\_\_ Camera - digital or disposable (please label!)
- \_\_\_ Battery powered camp lantern
- \_\_\_ Hat (baseball cap, bucket, wide-brim, visor)
- \_\_\_ Bandannas
- \_\_\_ Sunglasses
- \_\_\_ Swim goggles
- \_\_\_ Paperback book
- \_\_\_ Hammock with hanging straps
- \_\_\_ Hydration backpack (Camelback-style)

## ADDITIONAL REQUIRED ITEMS

### TWO WEEK CAMPERS:

*No laundry service available.*

- \_\_\_ Plain blue shirt or plain red shirt for color wars

### EQUESTRIAN SESSION:

- \_\_\_ Jeans or long pants (3 pair)
- \_\_\_ Cowboy boots with a 1" heel for riding

## CAMP BOOT & JEAN BOX

We welcome donations to our "Boot & Jean Box" from which campers can borrow riding boots and jeans.

## Lost And Found

Campers will check the lost and found table before leaving camp. All unclaimed items will be held at camp for two weeks after each session. Articles will not be held after this time period.

## DO NOT PACK (applies to ALL campers):

- |  |   |
|--|---|
| • Electronics with WiFi or cellular capabilities | • Radio   |
| • Cell Phone                                     | • Food  |
| • Smart Watches (with Internet capabilities)     | • Money   |
| • MP3 player                                     | • Valuables/Jewelry                                   |
| • eReader  | • Silly String  |
| • DVD player                                     | • NERF & Blaster Toys with foam darts, discs or balls |
| • Video Games                                    |   |

**Contraband Items (possession of these items will result in the camper being sent home without a refund)**

- |                               |                                      |
|-------------------------------|--------------------------------------|
| • Alcohol                     | • Matches, lighters                  |
| • Illegal Drugs               | • Fireworks/Sparklers                |
| • Vaping/e-cigarettes devices | (this includes the 4th of July week) |
| • Knives/pocket knives        |                                      |

*The best week of summer*



Read our Let's Get Packing blog for tips and tricks to make packing a breeze  
<https://www.campfirefw.org/camps/lets-get-packing/>





## EVACUATION PROCEDURES

In the unlikely event that Camp Fire would determine a need to evacuate Camp El Tesoro, we will attempt to contact each family starting with the primary household parent or guardian, then “secondary household” if provided, and then the emergency contact person. At that time further instructions will be given as to how the evacuation will proceed. For this reason, it is truly important that we have accurate contact information for parents and emergency contact persons during your child’s camp experience.



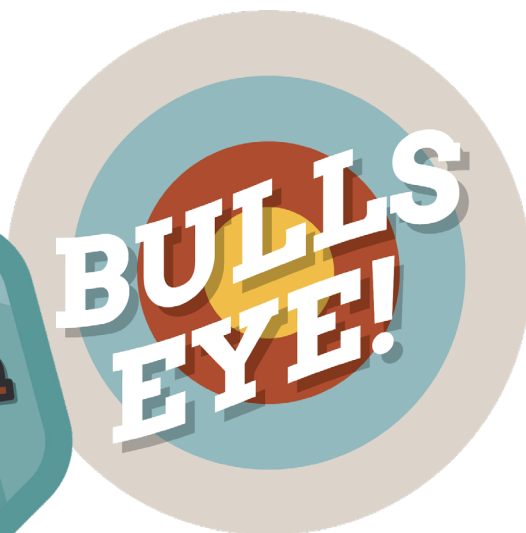
Based on the type of emergency, Camp Fire will make a decision on the most prudent way to return campers safely to their homes. Such an emergency may require parents or emergency contact persons to pick up their child at camp, or the Camp Fire Office in Fort Worth. If the need arises, general information regarding evacuation will be posted on our Camp El Tesoro social media avenues including Facebook and Twitter. If you plan on traveling while your child is at camp, please let the director know who the first point of contact will be during check-in.

## EMERGENCIES

Camp El Tesoro staff are First Aid & CPR certified. A designated emergency vehicle is on site at all times.



Each camp session a licensed medical professional is on property to coordinate camper care.







## HEALTH INFORMATION

**Important:** The health and safety of your child is our primary concern. To ensure our camp health care providers have the information necessary in advance, the Health Form must be filled out and submitted online through CampBrain two weeks prior to your child's arrival at camp.

### Sanitation

In addition to regular handwashing and hygiene, hand sanitizer stations will be strategically placed throughout camp. Program areas and materials will be sanitized in between uses. High touch areas within cabins and program areas (such as doorknobs, tables, light switches, etc.) will be cleaned and sanitized daily.

### Daily Wellness Checks

Counselors will conduct a daily health log for themselves and for campers as part of their bedtime routine monitoring for illness and will report any symptoms to the camp medical staff and camp directors.

### Medical Professionals

Each camp session a licensed medical professional is on property to administer medications, make preliminary medical assessments and coordinate camper care. This includes: (MD, DO, RN, NP, LVN, EMT, CNA)

### The Heat

Even if it's hot outside, camp is a great place to be! Campers easily adapt to living in the summer heat by staying hydrated, resting during the hottest part of the day and wearing cool cotton clothing. Camp staff are trained to recognize heat problems and take steps to minimize them. We plan quiet activities during the hottest part of the day in our air-conditioned cabins and campers swim daily. We require that each camper bring a

fan for inside the cabin and a water bottle with his or her name on it. We will see that it is always filled with water, which always makes the heat more bearable.

### Contagious Diseases, Fractures, Breaks & Stitches

Children with contagious diseases will not be allowed to attend camp until they are free of the disease, or until he/she is no longer contagious, as determined by a doctor. Campers with fractures, breaks, or stitches must have written permission from their physician to attend camp, as well as permission from the camp director.

### Vaccinations

We strive to ensure the health and safety of all campers. If your child is on an alternative vaccination schedule, we require they have a Texas vaccine exemption certificate from their doctor or place of worship.

### Head Lice

Head lice can become an issue anytime you gather children together at school, child care or camp. It is not indicative of uncleanliness and anyone can get them. Because lice are easily transmitted and require several steps to eliminate, we cannot keep children at camp who are found to have nits or head lice.

To help ensure your camper will have a positive experience at camp, it is your responsibility to check and, if necessary, treat your child for nits or head lice the week before camp begins. **Upon arrival at camp, if nits or head lice are discovered during the lice check at check-in, your camper will be sent home until the lice is treated. Campers must wait 24 hours after treatment, and until all signs of nits and lice are gone, before being allowed to return to camp.**





## Medications

If you will be sending any over-the-counter or prescription medications or vitamins, please follow the instructions below:

1. Complete the Health Form through your CampBrain account. Please include all medication and/or vitamins being sent to camp. Directions on the container label must match your written directions on the Health Form.
2. Regulations require prescribed medications and vitamins be sent in their original containers with the original pharmacy label. Prescription medication must be prescribed to the camper and will be dispensed according to the prescribed dosage. Your local pharmacy can provide you with an extra container if needed.
3. Camp health staff provides over-the-counter medication such as acetaminophen, ibuprofen, antihistamines and cough medicine. Please **DO NOT** send these items with your child to camp.
4. Only send the exact dosage, plus two extra, that your camper will need during his/her session. Exact directions for dispensing the medicine along with the time that it should be taken must be written on the Health Form.
5. Note your child's medications on the online Health Form through your CampBrain account. You must update/provide immunization history on the online Health Form, **OR** bring a **COPY** of your child's current shot record to leave at camp.

## "Medical Holidays"

We strongly discourage parents whose children are on medication throughout the year from putting them on "medical holiday" while they are at camp. It is not always in the child's best interest to take time off from his/her medication. We will be as accommodating as possible with your physician's recommendation.

## Illness & Accidents

Our camp's infirmary has a limited capacity to keep campers in extended isolation. In our experience, campers with medical conditions feel more comfortable recuperating at home. In such situations, the camp staff may contact parents and request that they come early and pick up their child from camp.

## Homesickness

With years of experience, we've learned four things about homesickness:

1. by watching for early signs, homesickness is usually avoidable;
2. once parents/guardians are out of sight, counselors and other campers come into a child's focus and the fun starts;
3. parents/guardians are usually more uneasy about leaving their children than children are in leaving their parents/guardians and,
4. the parent/guardian's attitude about their child being away from home has a strong impact on children.

Parents/guardians can help prevent homesickness prior to arrival at camp by speaking of the camp experience in a positive manner. **NEVER** tell your child that you may not make it without them or that you think they may miss home too much to stay away that long. Let them know how much you love them and want them to have a great experience in growing up!



## BEFORE CAMP

### COVID-19 Testing

A negative COVID-19 test is not required to attend camp, but it is recommended to self-test at home before arriving. Vaccination is strongly encouraged for anyone able to access it prior to camp.

## ARRIVING AT CAMP

Arriving at camp is an exciting time! Review the following check-in procedures to ensure a smooth drop-off.

Camp Fire Camp El Tesoro  
7710 Fall Creek Hwy, Granbury TX 76049

**Important: Please have your child arrive in a white shirt and any color shorts, with their swimsuit on underneath their clothes. Boys can arrive in their swim trunks but should have shorts in their backpacks for cabin photos following swim tests.**

### Times & Days

Campers arrive on Sunday, the date their session begins, between 3:00 - 4:30 p.m.

We ask that campers do NOT arrive outside of the time frame without having first contacted the Camp Director to get approval. If you are delayed, please call 817.989.9004.

### Arrival Health Screening

Upon arrival to camp, without exiting their vehicle, campers and any other individuals in the vehicle will be screened by the camp medical staff for any illness symptoms.

## Trunks & Luggage

Upon arrival you will receive color coded luggage tags. Staff will be present to assist with tagging and unloading luggage. Please make sure camper's name is on the outside of the footlocker/trunk and on any additional items, including fans, pillows and laundry bags.

## Fill Out/Upload Online Two Weeks Prior

Fill out or upload online two weeks prior to arrival at Camp:

- Health History Form, including Medication Information and Shot Records
- Parent Consent Form
- Upload Physician's Form (annual physical signed by doctor)

## What To Wear & Bring On Arrival

- Please have your child arrive in a white shirt and any color shorts for cabin photos
- Be dressed in closed toe tennis shoes or light hiking boots
- Arrive with a backpack containing towel and swimsuit
- Water bottle – 32 oz heavy duty
- ANY and ALL medications must be in ORIGINAL containers inside a sealable plastic bag labeled with your camper's name.



Find more  
SPACES TO  
EXPLORE





## DEPARTING CAMP

### Times & Days

Please note the date your camper's session ends. Families should not arrive before 5:45 p.m. without prior approval of the Camp Director.

- 4-day sessions depart/end on Wednesday.
- 6-day sessions depart/end on Friday.
- 13-day sessions depart/end on Friday.

### Closing Ceremony

All families are invited to attend their camper's closing ceremony. Closing ceremonies will begin at 6:30 p.m. and will conclude at approximately 7:15 p.m.

**Adults in charge of Pickup: please remember to bring your photo ID and have it ready to show the counselor at sign out.**

If you need assistance crossing the swinging bridge or loading your luggage, please contact camp before arriving, so that we can assist you as needed.



### Tenure Walking Staffs

Campers that attend El Tesoro for three summers receive a walking staff at Closing Ceremony with their name carved into it and the start of our tenure tree. Each year they are encouraged to bring their staff back and have another line carved into it. After ten years (all the years that a child can be a camper) the tree is complete.

### Luggage

Families may pick up luggage before coming to the closing program BUT be sure to walk back by the luggage area with your camper to make sure you have everything. Luggage will be color coded as designated on opening day and placed in luggage drop area. Proceed to parking after you have loaded your camper's luggage.

### Lost & Found

All lost and found items are gathered at the end of each session. Parents and campers should look through the lost and found prior to departure. If you get home and realize something is lost, please call the El Tesoro camp office at 817.989.9004 or email [CampET@CampFireFW.org](mailto:CampET@CampFireFW.org).

All unclaimed items will be held at camp for two weeks after each session. Articles will not be held after this time period.





## CAMP MAP

